

Flo

In order to create your Papercraft character please follow the steps below.

Step 1: Cut out the shapes.

Step 2: Fold and glue the individual shapes.

Step 3: Glue all the pieces together (A to A, B to B, etc).

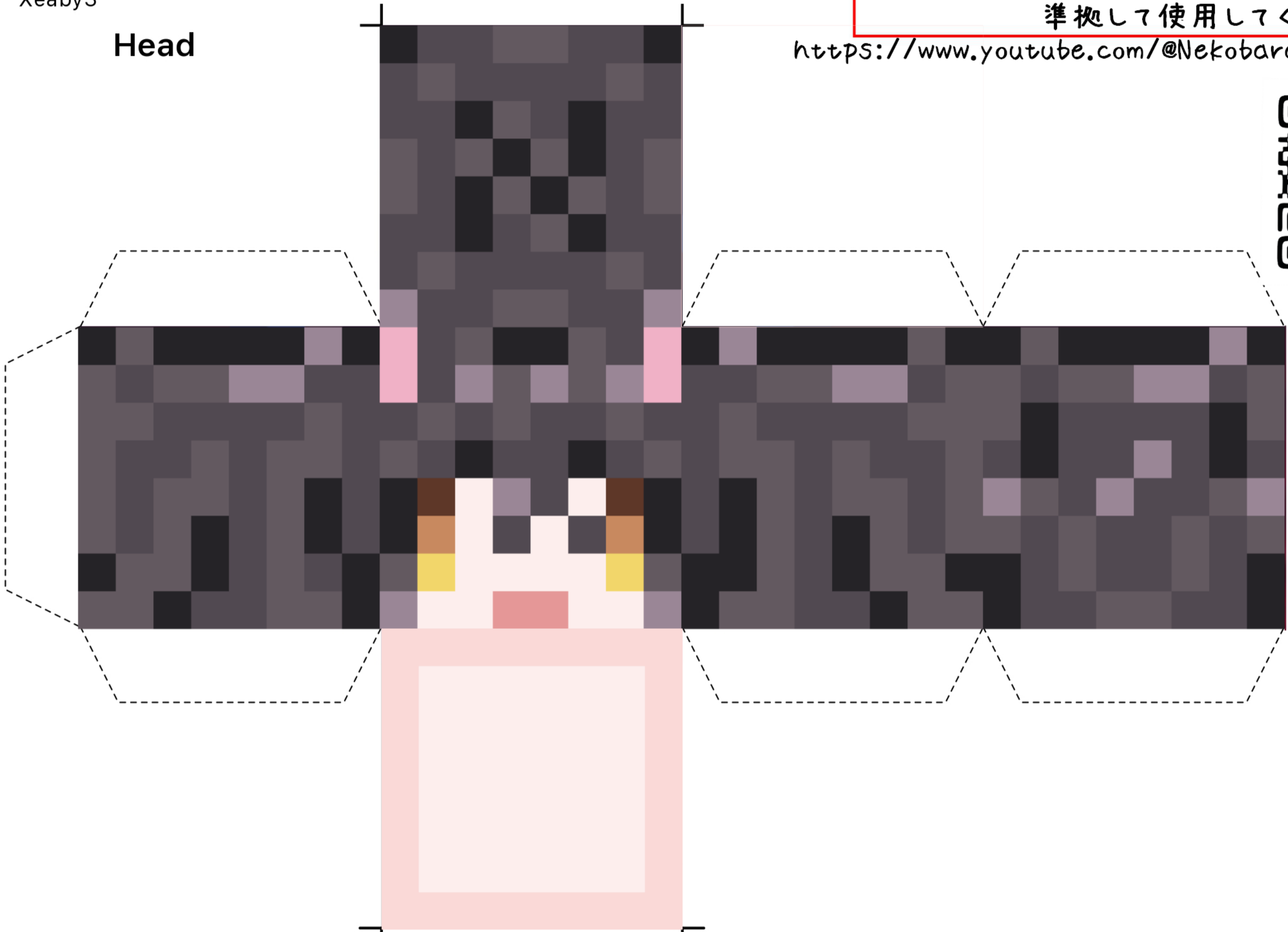
For more detailed step-by-step instructions please visit: <http://bit.ly/Xeaby3>



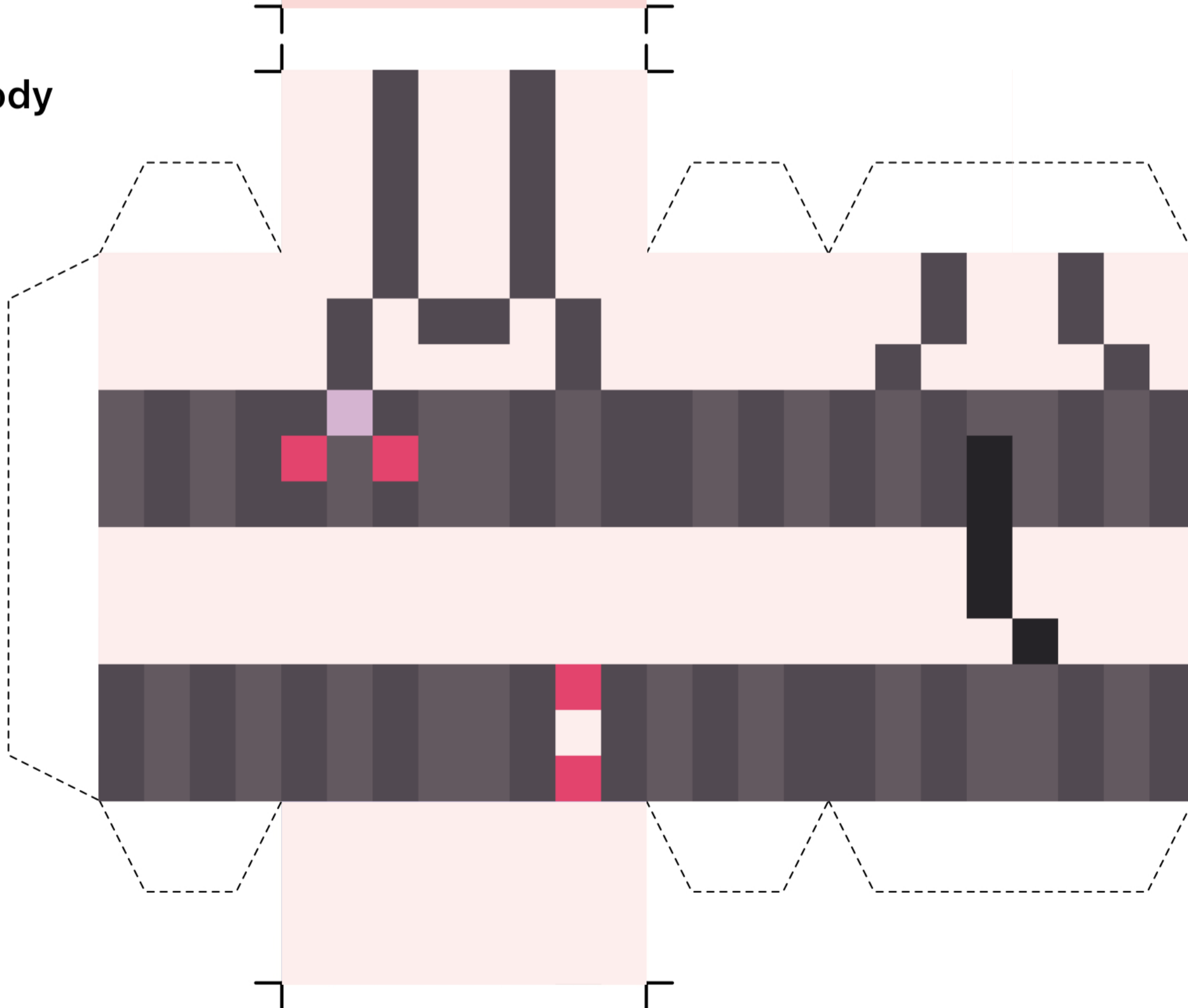
<https://www.youtube.com/@NekobaraRibon>



Head



Body





猫蕃りぼんさんの
二次創作ガイドラインに
準拠して使用してください。

<https://www.youtube.com/@NekobaraRibbon>

